



	<b>TORO C-301/C</b>	<b>TORO C-302/C</b>	<b>TORO C-303</b>	<b>TORO C-304/C</b>	<b>TORO C-305</b>	<b>TORO C-306</b>
↑	3,85 m 12 ft 7.5 in	5,00 m 16 ft 5 in	5,00 m 16 ft 5 in	6,00 m 19 ft 8 in	6,50 m 21 ft 4 in	8,00 m 26 ft 3 in
kg	350 kg 772 lb	330 kg 728 lb	350 kg 772 lb	320 kg 705 lb	320 kg 705 lb	300 kg 661 lb
↓	1,60 m 5 ft 3 in	1,60 m 5 ft 3 in	1,98 m 6 ft 6 in	1,60 m 5 ft 3 in	1,98 m 6 ft 6 in	1,98 m 6 ft 6 in
kg	152 Kg 335 lb	169 Kg 373 lb	161 Kg 355 lb	182 Kg 401 lb	179 Kg 395 lb	197 Kg 434 lb

# TORO C-Range Details

TORO MATERIAL LIFTS ARE EQUIPPED WITH TWO SAFETY SYSTEMS



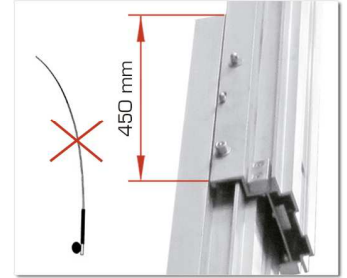
Auto-brake winch.  
CE Machinery Directives



Internal Pendulum  
Brake System (IPB)



Mast Section Unblocking  
System (MSU)



More mast overlap.  
Prevents fishing rod effect



Adjustable manoeuvring  
handle with Ø200 mm  
wheels included.  
(3 positions)



Reinforced forks included. (De-2 Stabiliser braces for  
tachable). Reversible & Adjust- greater lift stability.  
able design.



Adjustable mast blocking  
system for horizontal trans-  
portation.



Folding side  
legs included



Legs can be inserted in the front or  
back of the tower for positioning  
close to walls.



Spirit level

Adjustable legs

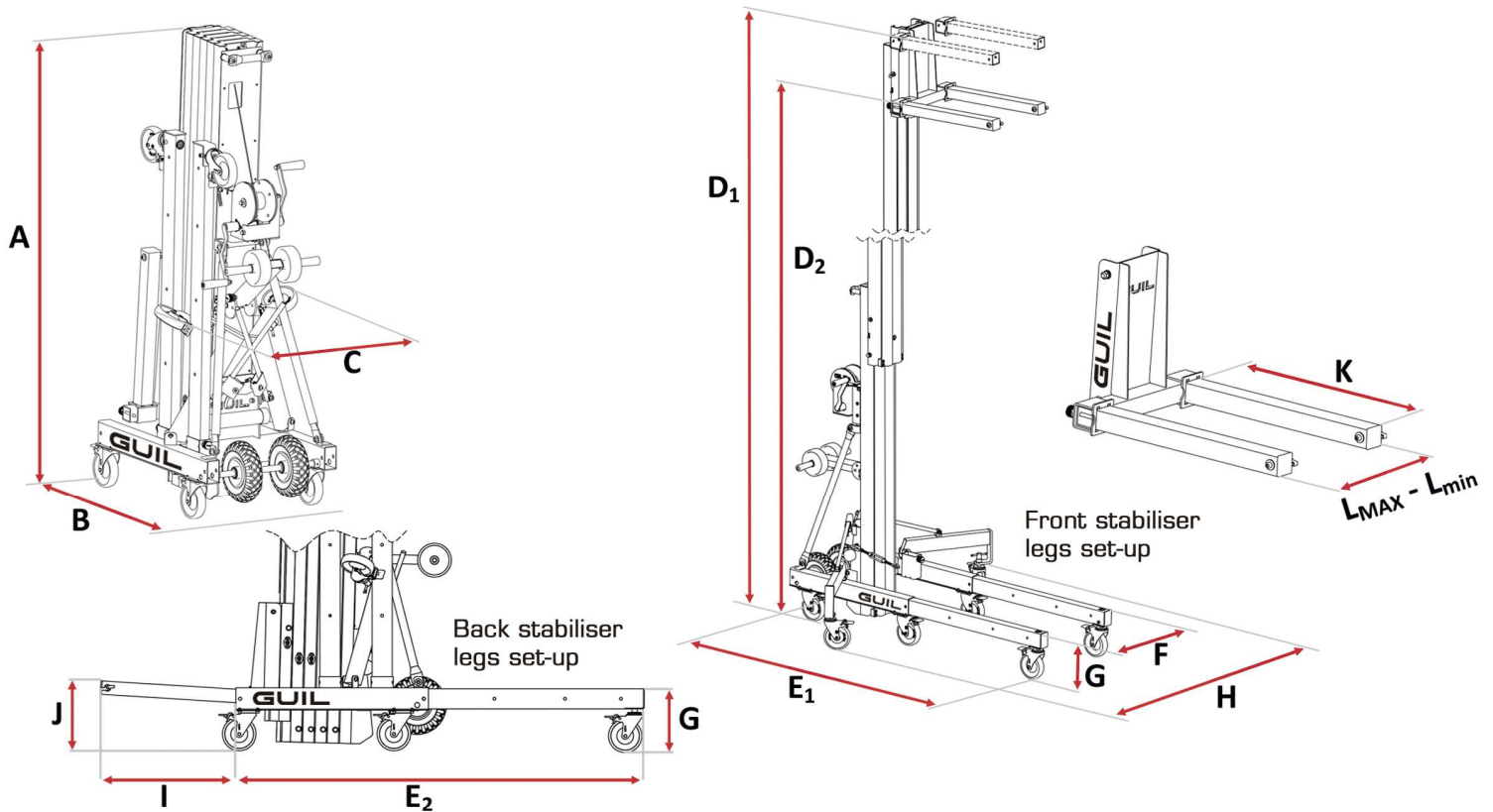
Compact designs and 12 wheels included for  
easy manoeuvring (Vertically and horizontally)



Ø150 mm adjustable  
wheels for perfect  
levelling.







TORO C Range			TORO C-306	TORO C-305	TORO C-303	TORO C-304/C	TORO C-302/C	TORO C-301/C
Number of sections			5	4	3	5	4	3
Maximum load			300 kg 661 lb	320 kg 705 lb	350 kg 772 lb	320 kg 705 lb	330 kg 728 lb	350 kg 772 lb
Weight			197 kg 434 lb	179 kg 395 lb	161 kg 355 lb	182 kg 401 lb	169 kg 373 lb	152 kg 335 lb
<b>STOWED</b>								
Height	A		198 cm 6 ft 6 in	198 cm 6 ft 6 in	198 cm 6 ft 6 in	160 cm 5 ft 3 in	160 cm 5 ft 3 in	160 cm 5 ft 3 in
Length	B		95 cm 3 ft 1.5 in	95 cm 3 ft 1.5 in	95 cm 3 ft 1.5 in	95 cm 3 ft 1.5 in	95 cm 3 ft 1.5 in	95 cm 3 ft 1.5 in
Width	C		66 cm 2 ft 2 in	66 cm 2 ft 2 in	66 cm 2 ft 2 in	66 cm 2 ft 2 in	66 cm 2 ft 2 in	66 cm 2 ft 2 in
<b>WORKING MEASUREMENTS</b>								
Maximum height	Forks up	D <sub>1</sub>	800 cm 26 ft 3 in	650 cm 21 ft 4 in	500 cm 16 ft 5 in	600 cm 19 ft 8 in	500 cm 16 ft 5 in	385 cm 12 ft 7.5 in
	Forks down	D <sub>2</sub>	760 cm 24 ft 11 in	610 cm 20 ft	460 cm 15 ft 1 in	560 cm 18 ft 4.5 in	460 cm 15 ft 1 in	345 cm 11 ft 4 in
Length	Front legs	E <sub>1</sub>	192 cm 6 ft 3.5 in	192 cm 6 ft 3.5 in	192 cm 6 ft 3.5 in	192 cm 6 ft 3.5 in	192 cm 6 ft 3.5 in	192 cm 6 ft 3.5 in
	Back legs	E <sub>2</sub>	183 cm 6 ft	183 cm 6 ft	183 cm 6 ft	183 cm 6 ft	183 cm 6 ft	183 cm 6 ft
Width		F	66 cm 2 ft 2 in	66 cm 2 ft 2 in	66 cm 2 ft 2 in	66 cm 2 ft 2 in	66 cm 2 ft 2 in	66 cm 2 ft 2 in
Leg height		G	28 cm 11 in	28 cm 11 in	28 cm 11 in	28 cm 11 in	28 cm 11 in	28 cm 11 in
Width w/ stabilisers unfolded		H	147 cm 4 ft 10 in	147 cm 4 ft 10 in	147 cm 4 ft 10 in	147 cm 4 ft 10 in	147 cm 4 ft 10 in	147 cm 4 ft 10 in
Distance to the wall		I	57 cm 1 ft 10 in	57 cm 1 ft 10 in	57 cm 1 ft 10 in	57 cm 1 ft 10 in	57 cm 1 ft 10 in	57 cm 1 ft 10 in
Load height		J	30 cm 12 in	30 cm 12 in	30 cm 12 in	30 cm 12 in	30 cm 12 in	30 cm 12 in
<b>FORKS</b>								
Length		K	66 cm 2 ft 2 in	66 cm 2 ft 2 in	66 cm 2 ft 2 in	66 cm 2 ft 2 in	66 cm 2 ft 2 in	66 cm 2 ft 2 in
Maximum width		L <sub>MAX</sub>	46.5 cm 1 ft 6.5 in	46.5 cm 1 ft 6.5 in	46.5 cm 1 ft 6.5 in	46.5 cm 1 ft 6.5 in	46.5 cm 1 ft 6.5 in	46.5 cm 1 ft 6.5 in
Minimum width		L <sub>min</sub>	33 cm 1 ft 1 in	33 cm 1 ft 1 in	33 cm 1 ft 1 in	33 cm 1 ft 1 in	33 cm 1 ft 1 in	33 cm 1 ft 1 in

**HRT** FORK



**ACT-01** PIPE CRADLE



**ACT-04** LOAD PLATFORM **ACT-04/M**



**\*ACT-02** FORK EXTENSIONS



**ACT-05** LOAD HOOK ARM



**ACT-11** GLASS INSTALLATION



**ACT-10** GLASS INSTALLATION



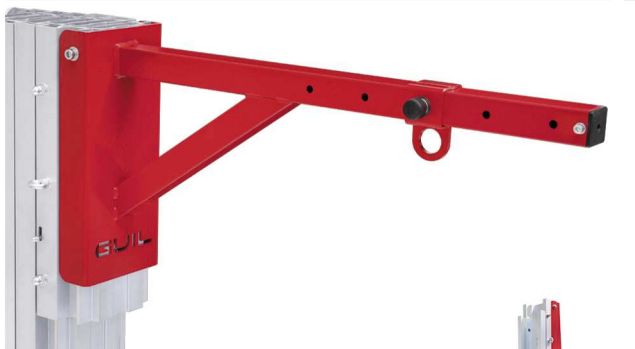
**ACT-06** ROLLER DOOR & WINDOW SHUTTERS



**ACT-07** FLOOD LIGHT ADAPTOR



**\*ACT-08** 5-POSITION BOOM ARM



**\*ACT-09** FORK WIDENER



COUNTERWEIGHTS & HOLDER



ELECTRIC LIFTING SYSTEM

**ELECTRIC**

**2 Systems in 1 - Manual & Electric**

Practical system that allows you to raise the load electrically.



\*This adaptor is not suitable for the A-Range towers.



## Electric Lifting System for TORO Lifters (B - C - D Ranges)



With this practical and very safe system, you have the possibility to raise and lower the TORO material lifts electrically (ranges B, C and D); converting the manual towers into electric towers.

The 'ELECTRIC' system is a very useful accessory which allows you to quickly and effortlessly raise the TORO lifters guaranteeing utmost safety at all times.

The accessory is made up of an industrial drill (brand: METABO, Germany), a power reducer and an adaptor to secure it to the hand winch on the lifter.

The adaptor ensures a firm fix of the drill so that the user is not required to hold the drill in place, allowing to work with just one hand.



The 'ELECTRIC' system is installed quickly and easily and has the following references depending on the tower it will be used with:

### TORO B-Range towers — ref. ELECTRIC-B/2

Adapter and drill for ELECTRIC operation of TORO B-Range Lifts. Price includes a single-handled AL-KO 901 winch to replace the double-handled BULL300-D (Net Weight: 7.30 kg – without winch)

### TORO C-Range towers — ref. ELECTRIC-C/2

Adapter and drill for ELECTRIC operation of TORO C- & E-Range Lifts. Price includes a single-handled AL-KO 901 winch to replace the double-handled BULL400-D (Net Weight: 7.30 kg – without winch)

### TORO D-Range towers — ref. ELECTRIC-D/2

Adapter and drill for ELECTRIC operation of TORO D-Range Lifts. (Net Weight: 7.10 kg)

NOTE: When this electric system is used the TORO D-Range towers have a maximum load capacity of 350 kg.

# APPLICATIONS

GUIL manufactures a wide range of innovative material lifts, adapters and accessories designed to cover the needs for a large variety of applications:

CE

| HVAC

| GLASS

| AWNINGS & SHELTERS

| ROLLER SHUTTERS & BLINDS

| INSTALLATIONS

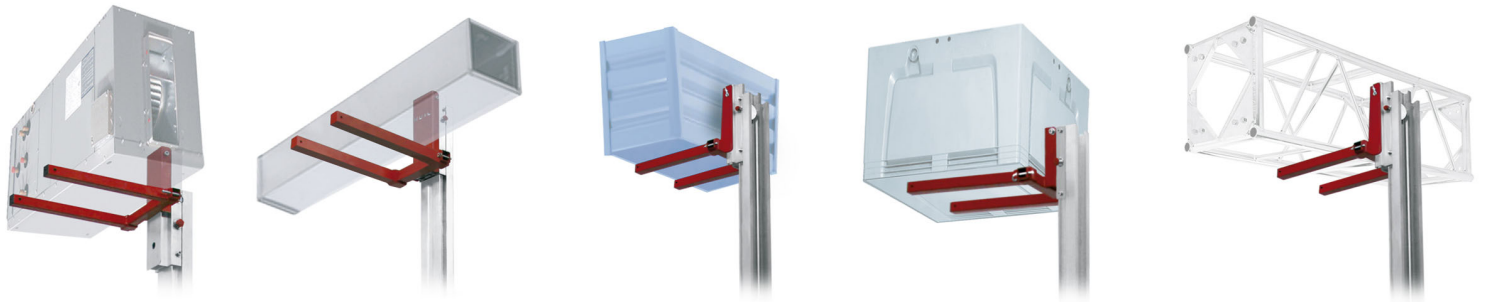
| MAINTENANCE WORK

| PIPING & DUCTS

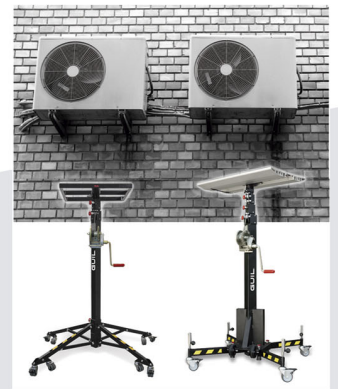
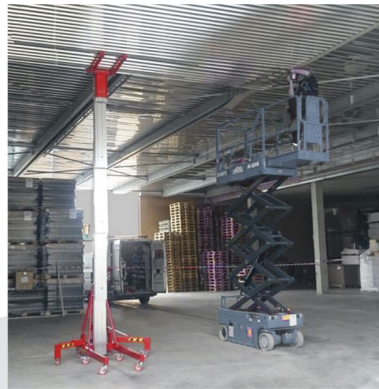
| METALWORK

| CARPENTRY

| EXHIBITION STANDS



## CHOOSE A MODEL & LIFT YOUR LOAD



MADE IN SPAIN  
[www.guil-lifters.com](http://www.guil-lifters.com)



P.I. La Creu C/ Ismael Tomás Alacreu, 28-30 - CP 46250 L'Alcúdia (Valencia) SPAIN  
Fax +34 962540833 Tel +34 962996500 [info@guil.es](mailto:info@guil.es)

GUIL - YOUR EUROPEAN LIFTING TOWER MANUFACTURER

