

URW-095

(0.995t x 3.5m)

- Total width 0.6m
- Max working radius 8.41m
- Petrol powered with LPG and electric option
- Diesel powered with electric option
- Zero length increase with electric option
- Multi-position configurable outriggers
- Intelligent voice warning system
- Turn-over protection system, stability warning
- Radio remote control as standard
- Intelligent throttle activation for economy and ecology

Max. Boom Length 8.65m

Max. Lifting Height 8.8m

Capacity 0.995t x 3.5m

Weight 1850 - 2090kg
(Depending on fuel option)

Optional fly jib & searcher hook

Capacity	700kg (max)
Length	1500mm
Weight	40kg
Tilt angles	0°, 20°, 40°, 60°



The URW-095 is just 0.6m wide and designed specifically for interior access and benefits from class-leading heavy lifting capacity. The URW-095 boasts unrivalled boom length and its outriggers allow for independent multi-angle configurations to suit the working space especially in restricted or confined areas - the patented UNIC stability protection system provides the benefit of turnover protection for enhanced safety.



ADDITIONAL FEATURES



Radio remote control



UNIC stability protection system

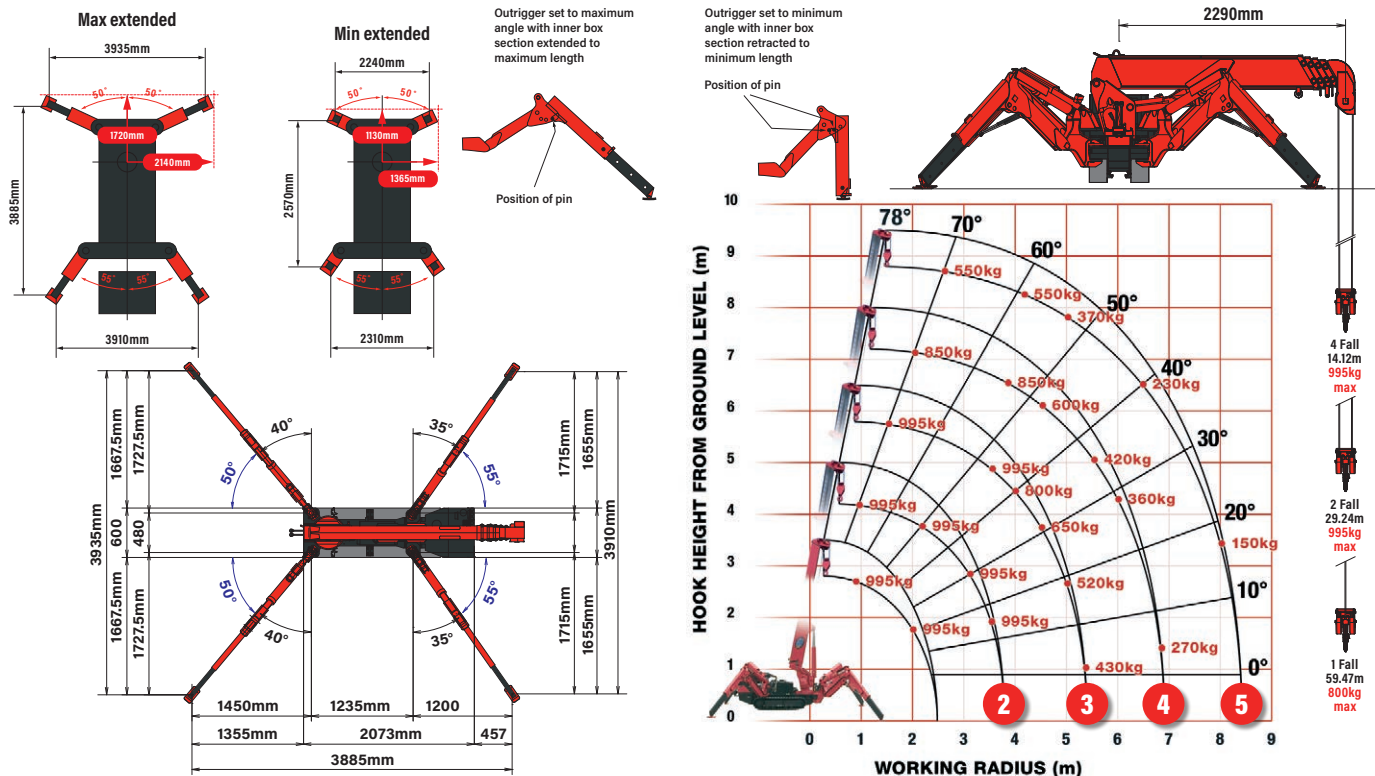
CRANE SPECIFICATIONS

Crane capacity	capacity:	0.995t x 3.5m
Max working radius	max:	8.41m
Max lifting height	approx:	8.8 m (9.8m with fly jib, 10.47m with fixed hook)
Rope length	max:	14.12m (4 fall), 29.24m (2 fall), 59.47m (1 fall)
Dimensions	folded:	2690mm (2905mm diesel & electrical dual) (l) x 600mm (w) x 1375mm (h)
Weight	unladen:	petrol 1850kg, 1950kg with electric option diesel 1920kg, 2090kg with electric option
Point loadings	Due to the many variables involved, point loadings are only available on request	
Hook speed	approx:	10m/min (with 4 layers and 4 falls)
Telescopic system	boom length:	2.53 - 8.65m (2.72 - 8.65m diesel)
	telescoping speed:	6.12m/20 seconds
	boom type:	5 section, hydraulically telescoping boom, hexagonal box construction
Derricking angle/speed	approx:	0 - 78°/11 seconds
Slewing angle/speed	approx:	360° (continuous) 1.5 min rpm
Traction system	drive:	hydrostatic, stepless forward and reverse
	travel speed:	0 - 2.3 km/h
	gradeability:	20° (vertical), 10° (traverse)
	track ground length:	1050mm
	track ground pressure:	48kPa (0.49 kg/cm²)
	track width:	180 mm
Engine	manufacturer:	Mitsubishi (Kubota diesel)
	fuel:	petrol with LPG and electric options, diesel with electric option
	maximum output:	9.6kW (13 PS) / 2000min (U/Min)
	starting method:	electric and recoil start as standard
	tank capacity:	6 litres petrol, 9 litres diesel
Electric motor	power:	3.7kW
	voltage:	400v AC 50/60 Hz
Standard equipment	radio remote control, overwinding alarm, computer controlled intelligent voice warning system, multi-function operation by radio remote control, intelligent throttle activation, automatic hook stow, load indication, turn-over protection system with stability warning lamps and alarm	
Optional equipment	1 fall hook block, 2 fall hook block, LPG dual power, mains electric dual power (400v), low marking tracks, searcher hook small 300kg, searcher hook 700kg, fly jib 700kg with single part line	

MINI SPIDER CRANE

UNIC
CRANES EUROPE

MAIN BOOM RATED LOADS WITH OUTRIGGERS SET TO MAX & OUTRIGGER POSITIONS



SECOND STAGE EXTENDED 2.53 - 4.075m BOOM LENGTH

Working radius	m	up to 1.0	1.4	1.5	1.8	2.0	2.5	3.0	3.5	3.835
Outrigger										
Max-extended	kg	995	995	995	995	995	995	995	995	900
Min-extended	kg	995	995	995	995	995	650	490	350	250

THIRD STAGE EXTENDED 4.075 - 5.61m BOOM LENGTH

Working radius	m	up to 2.2	2.5	2.9	3.0	3.5	4.0	4.5	5.0	5.37
Outrigger										
Max-extended	kg	995	995	995	995	995	800	650	520	430
Min-extended	kg	800	650	530	500	380	280	220	160	120

FOURTH STAGE EXTENDED 5.61 - 7.13m BOOM LENGTH

Working radius	m	up to 3.3	3.8	4.0	4.5	5.0	5.5	6.0	6.5	6.89
Outrigger										
Max-extended	kg	850	850	750	600	500	420	360	320	270
Min-extended	kg	420	340	300	250	190	140	100	80	60

FIFTH STAGE EXTENDED 7.13 - 8.65m BOOM LENGTH

Working radius	m	up to 3.8	4.1	4.5	5.0	5.5	6.0	6.5	7.0	8.0	8.41
Outrigger											
Max-extended	kg	550	550	450	370	310	270	230	200	150	130
Min-extended	kg	350	290	250	200	160	130	100	70	40	30

SEARCHER HOOK SMALL - 300kg

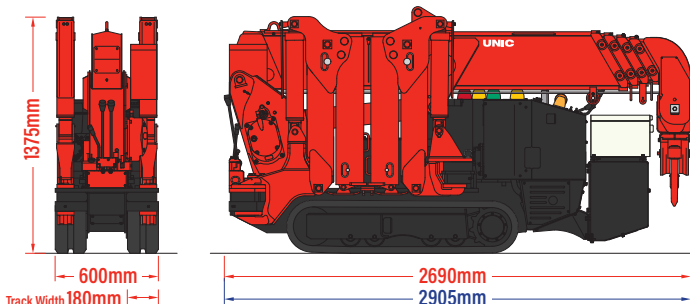
Stowed position

In operation

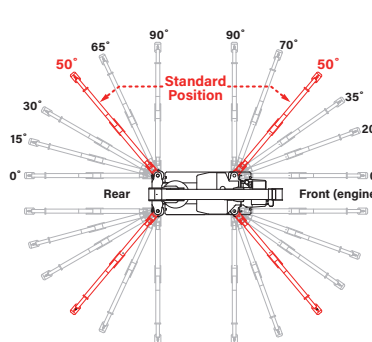
Crane capacity	300 kg (max)
Length	500 mm
Weight	15 kg
Angles	0°, 20°, 40°, 60°

DIMENSIONS

Petrol Model Dimensions Diesel Model Dimensions



OUTRIGGER ANGLE POSITIONS



OPTIONAL LPG GAS

