

# URW-295-2

WITH HYDRAULIC JIB

- Total width 0.84m
- Max working radius 8.41m, 11.7m with searcher and single-line hooks
- Available as Petrol, Diesel and Eco models
- Operator control of outrigger extension
- Radio remote control as standard
- Working area limitation (optional)
- Variable outriggers (optional)
- Intelligent throttle activation for economy and ecology

Max. boom length 8.65m

Max. lifting height 8.8m

Capacity 2.9t x 1.4m

Max Lifting Height With Jib 12.5m

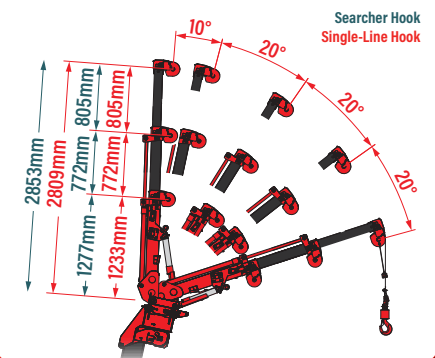
750kg Capacity  
Searcher Hook

750kg Capacity  
Single Line Hook

995kg Capacity  
Rhino Hook

750kg Capacity  
Stub

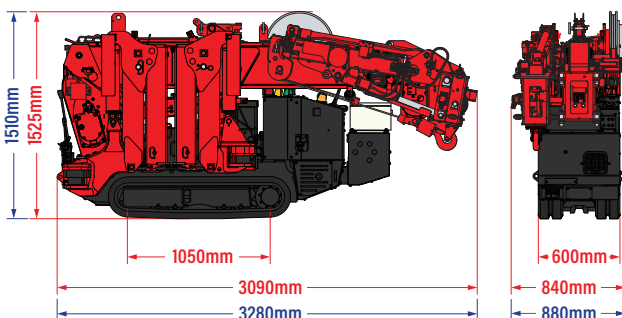
## JIB DIMENSIONS



The URW 295-2 builds upon the proven features of the URW-295 and introduces four innovative attachments, enhancing its versatility for diverse lifting applications. The new telescoping luffing jib/searcher hook offers a maximum capacity of 750kg, jib extension range of 1.2m to 2.8m. This attachment also features a luffing range of -10° to 60° offsets while also increasing the max lifting height of the crane to 12.5m and an impressive working radius of 9.1m. The new heavy duty rhino hook attachment fits directly to the main boom head, has a maximum lifting capacity of 995kg and a offset range of 0°, 20°, 40° & 60°

## DIMENSIONS

Petrol Model Dimensions Diesel Model Dimensions Eco Dimensions Available On Request



## RATED LOADS - OUTRIGGERS SET TO MAXIMUM

