

URW-295 VO

VARIABLE OUTRIGGER OPTION

UNIC
CRANES EUROPE

The UNIC URW-295 VO optional upgrade retains all the benefits of the standard URW-295 or URW-295-2 models, but sees the addition of variable, adjustable outriggers, enabling this mini crane to operate around fixed obstacles on site to suit the lifting requirements of each project. The adjustable outriggers reduce the working footprint of this already compact mini machine, making it ideal for working in extremely tight and small spaces.

Max. boom length 8.65m

Capacity 2.9t x 1.4m

Max. lifting height 8.8m

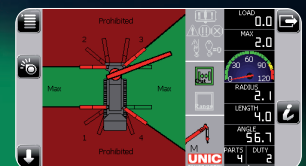
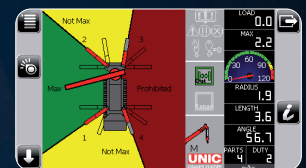
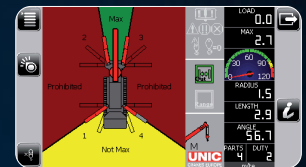
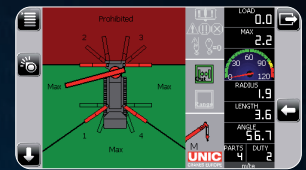
Weight 1850 - 2490kg
(Depending on fuel option)



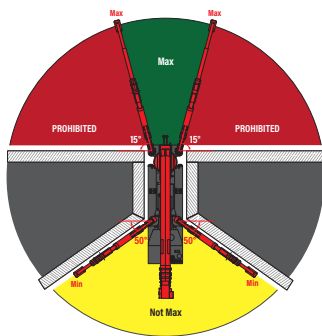
Radio remote control



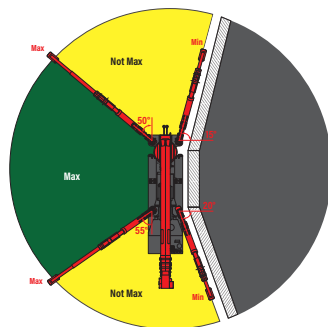
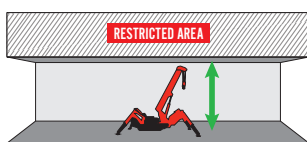
Full safe load indicator



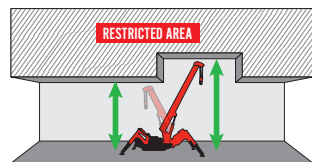
VARIABLE OUTRIGGERS INCLUDING SLEW & HEIGHT LIMITATION



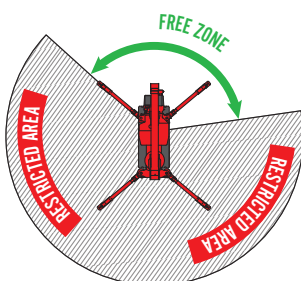
Height Limitation



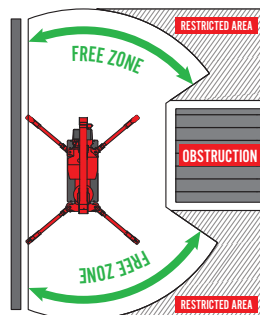
Variable Height Limitation



Slew Limitation



Variable Slew Limitation



AVAILABLE ON ECO-295 MODELS



OPTIONAL RADIO REMOTE



Radio remote control with digital feedback

